

ZA3600 Installation



- 1 Orient the bar included with the ZA3600 sensor so that the countersinks will face down.
Note: A black bar is shown for instructional purposes only. The bar included with the kit will be white



- 2 Slide the bar from the left side over the keyboard attachment.



- 3 Slide the bar fully onto the keyboard.



- 4 Select the smaller of the provided screws.



- 5 Insert the screw into the inner hole on the bar. Use the provided screwdriver to tighten the screw.



- 6 Insert the bar into the square opening in the sensor. Ensure that the screw holes on the bar and sensor are aligned.

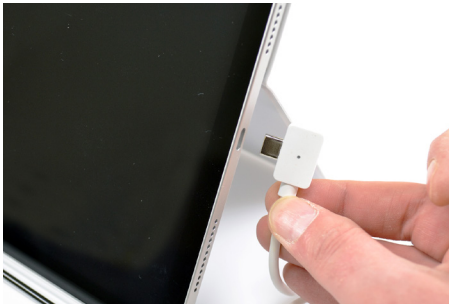


- 7 Insert the longer screw into the hole.



- 8 Use the provided screwdriver to tighten the screw, securing the sensor to the bar.

ZA3600 Installation



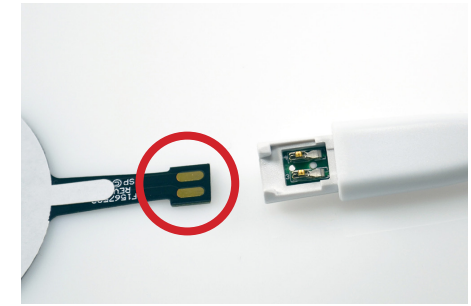
- 9 Plug the USB-C connector into the power port on the tablet.



- 10 Determine which flex sensor will be used in your installation.
- The Side Mount flex sensor will mount to the side of the kickstand. (steps 17 - 22).
 - The Camera Hole Mount flex sensor will route through the camera hole on the kickstand (steps 23 - 28).



- 11 Slide the cover on the flex sensor connector cable back to reveal the contacts.



- 12 Identify the contacts on the provided flex sensor.



- 13 Place the flex sensor appropriate for your installation into the flex sensor connector cable.



- 14 Slide the cover on the cable over the flex sensor.



- 15 Ensure that the cover snaps fully into place.



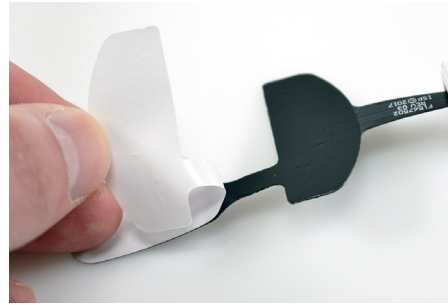
- 16 Remove the back cover/kickstand from the tablet.

ZA3600 Installation

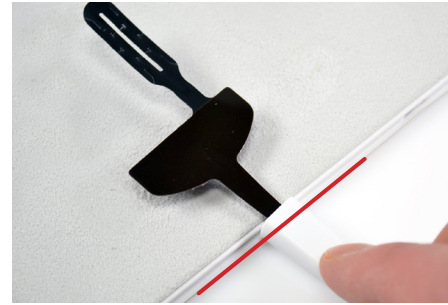
Side Mount Installation



17 Identify the approximate center of the kickstand panel on the back cover (on the side opposite of the camera cut-out). This will be the location of the flex sensor.



18 Peel the liner from the Side Mount flex sensor.



19 On the felted side of the backcover/kickstand, carefully align the cover of the flex sensor connector cable with the edge, in the location determined in Step 16.



20 Press the flex sensor against the felted surface for at least 10 seconds.



21 Place the back cover/kickstand onto the tablet so that flex sensor is captured between the tablet and the cover. The back of the tablet should approximately resemble the above image.



22 With the kickstand and keyboard deployed, the assembly should resemble the above image.

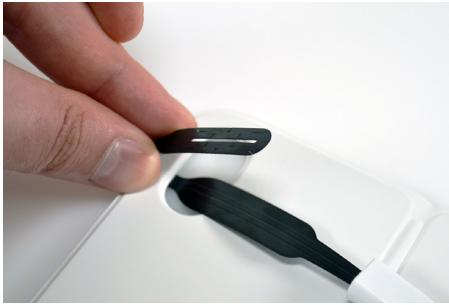
Camera Hole Mount Installation



23 Insert the Camera Hole Mount Flex Sensor, liner side facing up, through the camera hole on the back cover/kickstand as shown.



24 Peel the liner from the flex sensor.



- 25** Fold the adhesive side of the flex sensor over the top of the cover to align with the rigid section of the flex sensor.



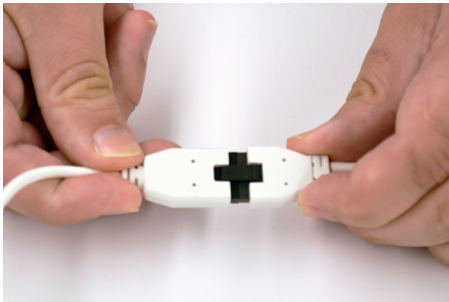
- 26** Place the adhesive portion onto the rigid portion and apply pressure for at least 10 seconds.



- 27** Place the back cover/kickstand onto the back of the tablet. Slide the flex sensor over so that it will not block the cover.



- 28** With the kickstand and keyboard deployed, the assembly should resemble the above image.



- 29** If not already done, connect the 2 halves of the sensor cable.



- 30** Plug the micro USB cable into a previously installed S2865 Power/Alarm box or Zips Alarm Unit.



- 31** Plug the USB-C cable into the OEM charger. Plug the charger into an outlet.