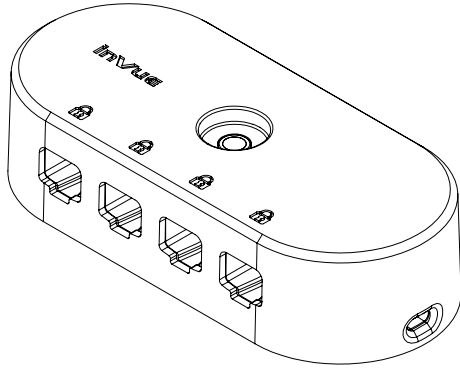
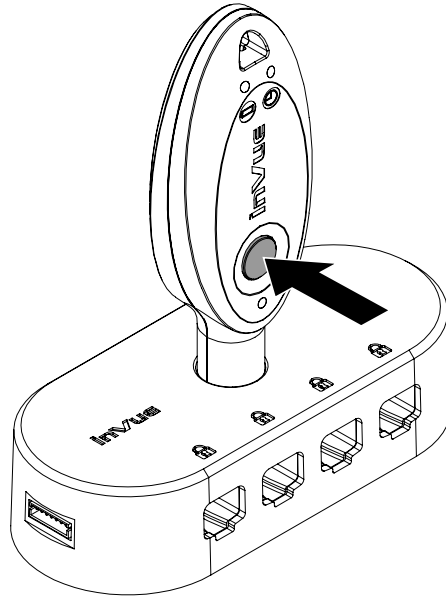


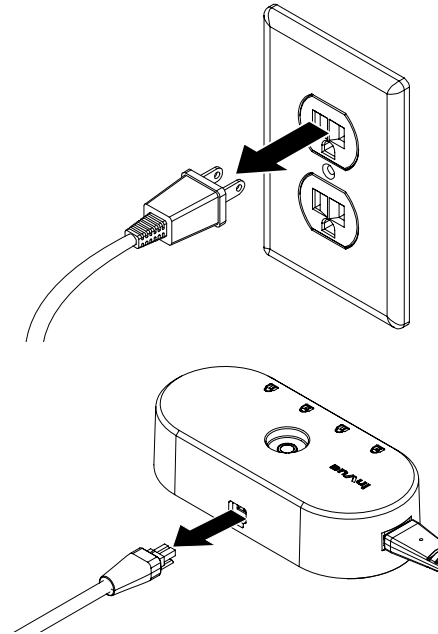
Zips 4 Port Alarm Unit Merchandising Guide



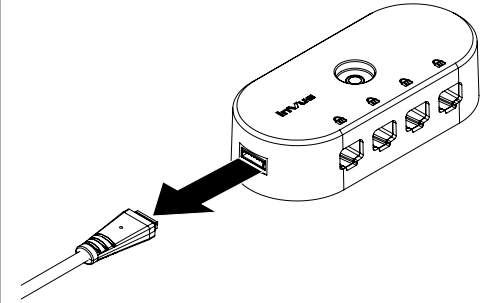
- 1** Use a charged and coded OneKEY to deactivate the Alarm Unit.



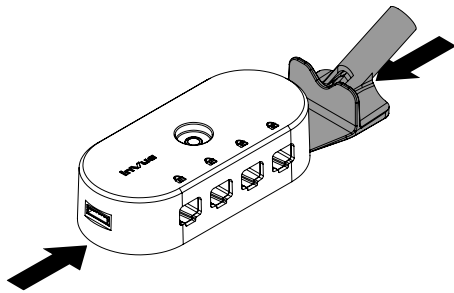
- 2** If the Alarm Unit was powered, unplug the power supply from the outlet and unplug the cable from the Alarm Unit.



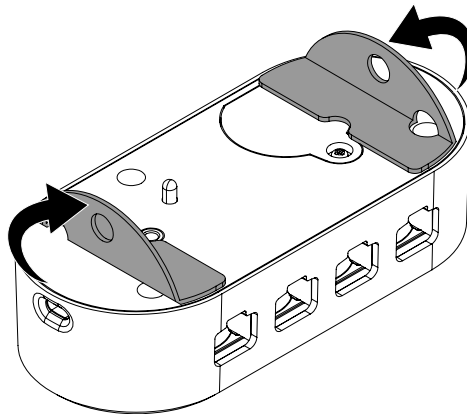
- 3** If used, unplug the remote IR dot from the Alarm Unit.



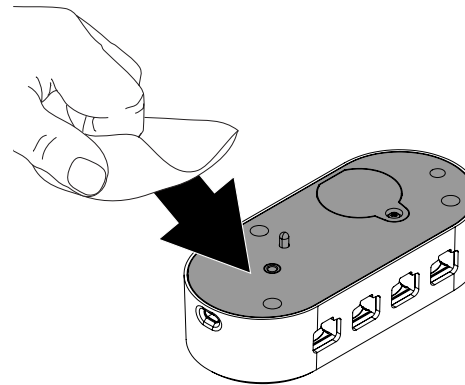
- 4** If removing the Alarm Unit from the position, use the scraper removal tool (DNTX93) to break the adhesive bonds between the 2 adhesives on the Alarm Unit and the fixture surface.



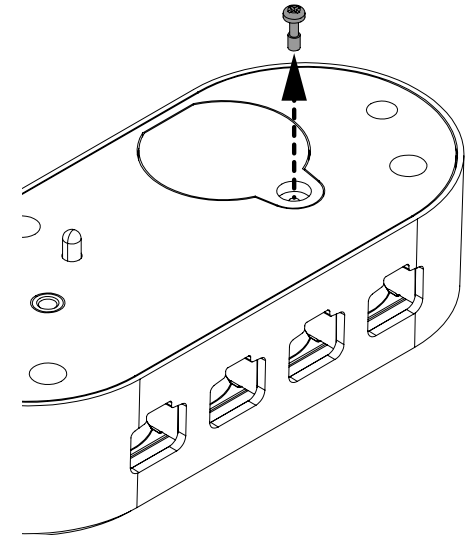
- 5** Peel the 2 old adhesives from the Alarm Unit.



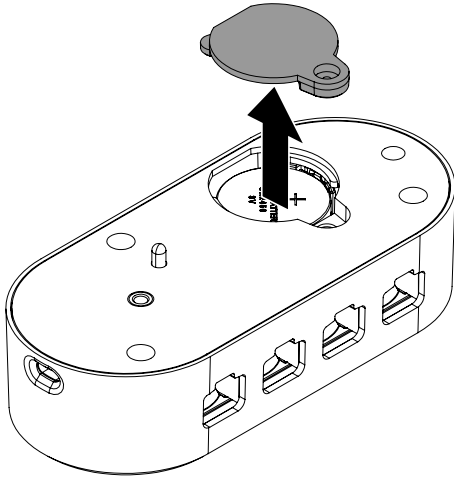
- 6** Use an alcohol wipe to clean any adhesive residue from the bottom of the Alarm unit. Allow it to dry completely.



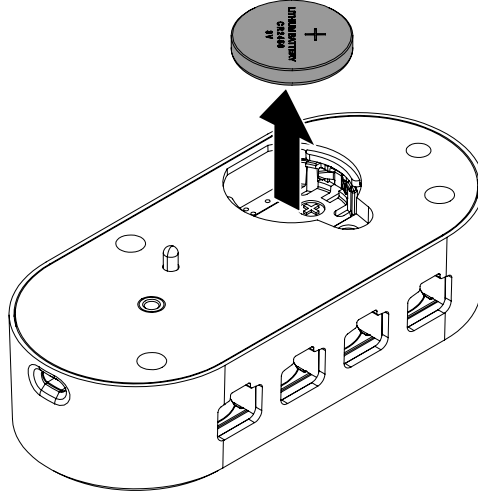
- 7a** If the battery needs to be changed out, use a Philips head screwdriver to remove the screw securing the battery door in the bottom of the Alarm Unit.



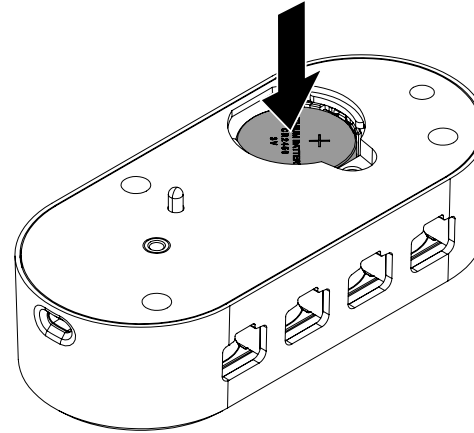
7b Remove the battery door.



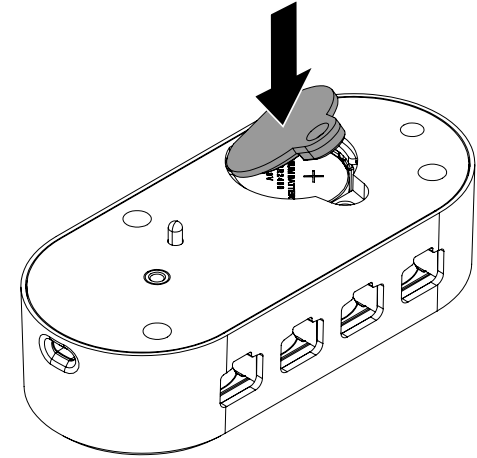
7c Remove the old battery.



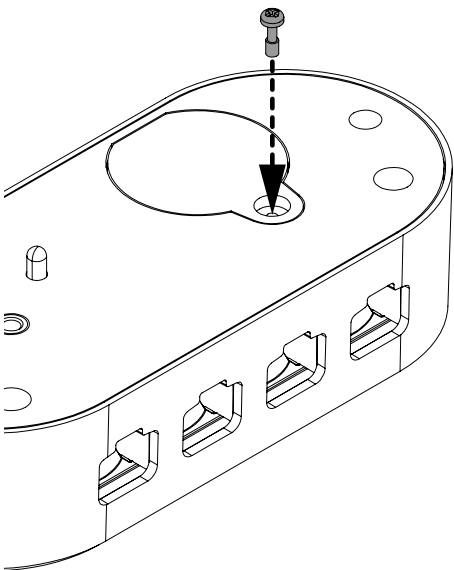
7d Insert the new CR2450, with the Positive Side (+) facing up, into the battery holder.



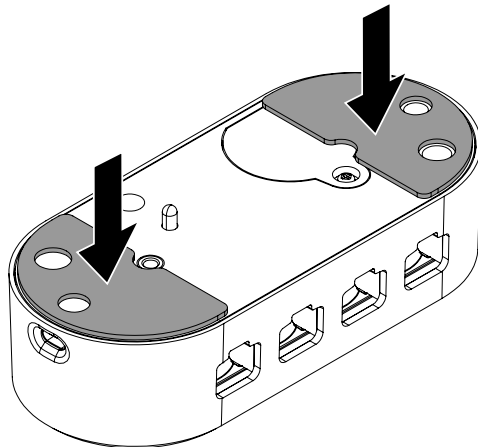
7e Replace the battery door by first insert the small tab into the opening then pivoting the door down into the Alarm unit.



7f Insert and tighten the screw to secure the battery door.



8 Remove 2 of the replacement adhesives (ADH2309) from their backing and align it with the bottom of the Alarm Unit as shown. Smooth them into place for at least 10 seconds.
Note: The Alarm Unit is now ready to be reinstalled. Consult the installation guide for more information.



Rev0 8/10/22

invue

www.invue.com

NA / LATAM // 704.752.6513 • 888.55.INVUE

EMEA // +31.23.8900150

APAC // +852.3127.6811

© 2022 InVue Security Products Inc. All rights reserved.
InVue is a registered trademark of InVue Security Products.